

GREGOIRE

TOWNHOMES



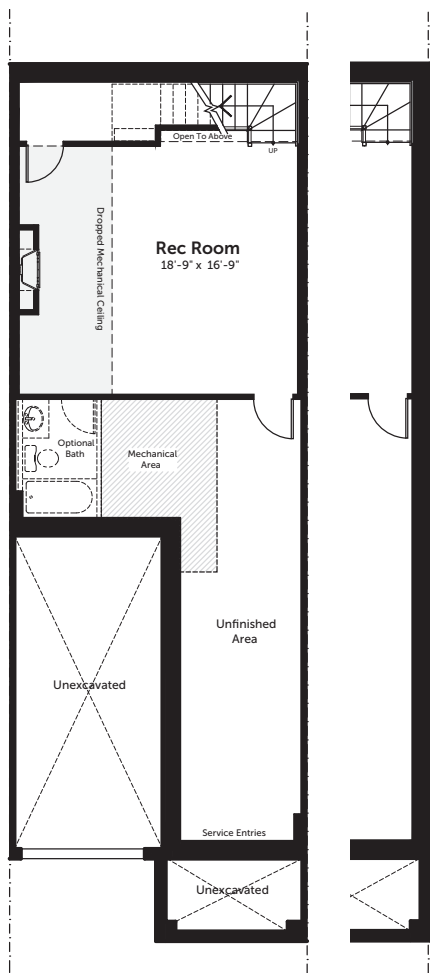
2160 SQ.FT. 3 BED 2.5 BATH
INCLUDES 455 SQ.FT. FINISHED BASEMENT



GREGOIRE

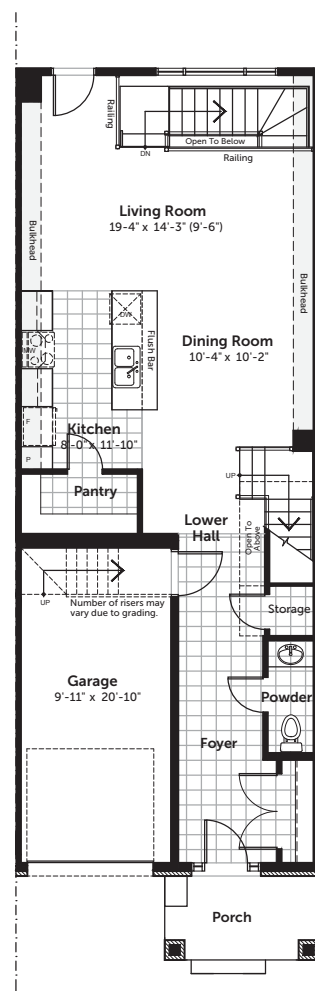
TOWNHOMES

2160 SQ.FT. 3 BED 2.5 BATH
 INCLUDES 455 SQ.FT. FINISHED BASEMENT



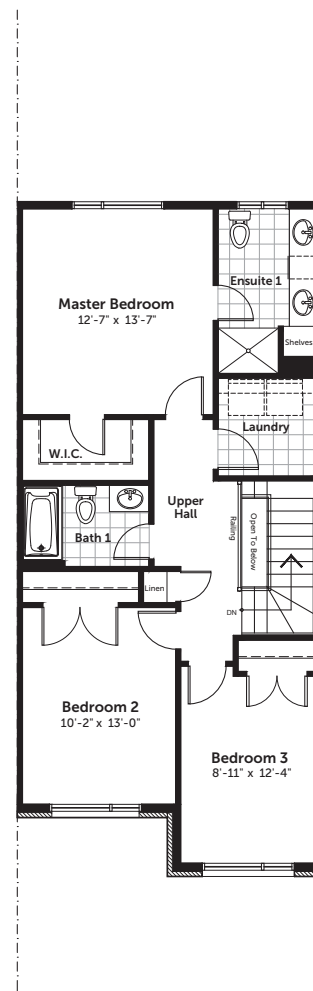
end unit

basement



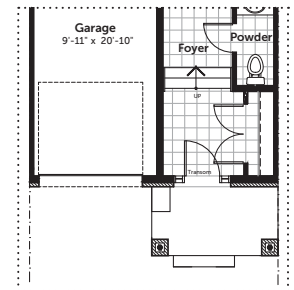
end unit

ground

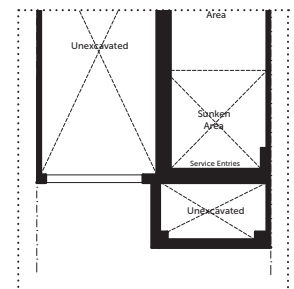


end unit

second



sunken entry ground



sunken entry basement

DISCLAIMER Materials, specifications and floor plans are subject to change without notice. All dimensions are approximate and may not be to scale. Actual usable floor space may vary from the stated floor area. Exterior elevations are artistic concepts only: window size and design, roof pitch and brick detail may vary from plan. Layout for kitchen, furnace, HWT and laundry tub may vary from plan. Vertical and horizontal bulkheads, which are not shown on plan may be required for structural plumbing and ventilation runs. E. & O.E. Issued: April 2018