

# — WOODHALL

TOWNHOMES



2180 SQ.FT. 3 BED 2.5 BATH

INCLUDING 455 SQ.FT. FINISHED BASEMENT

[claridgehomes.com](https://claridgehomes.com)

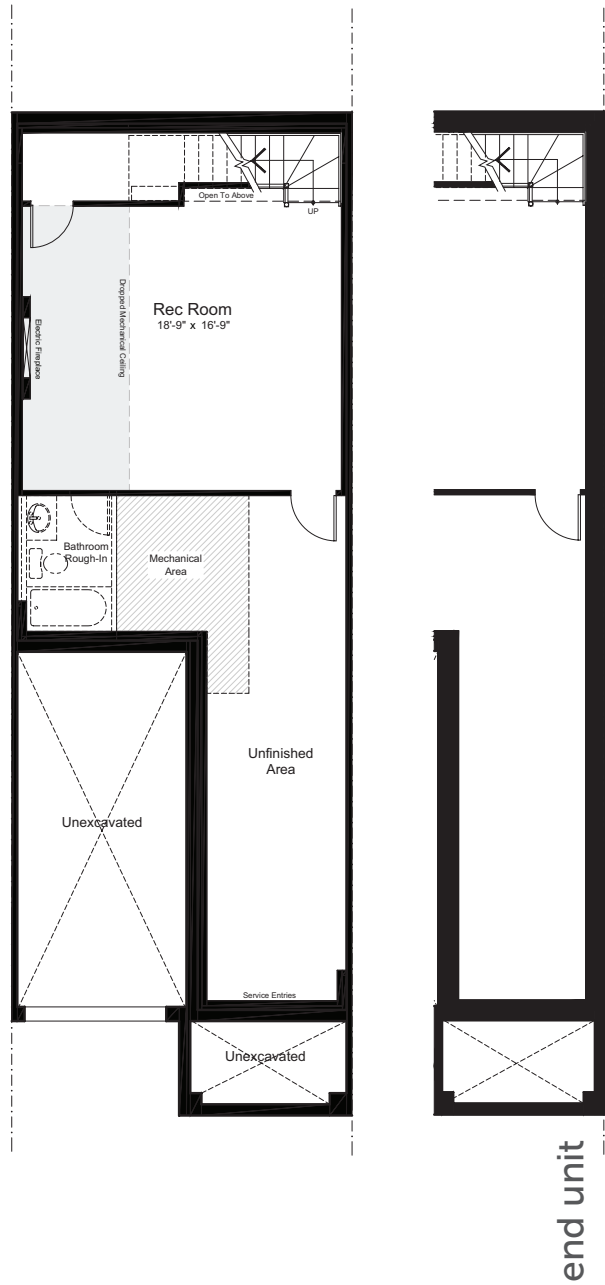


# WOODHALL

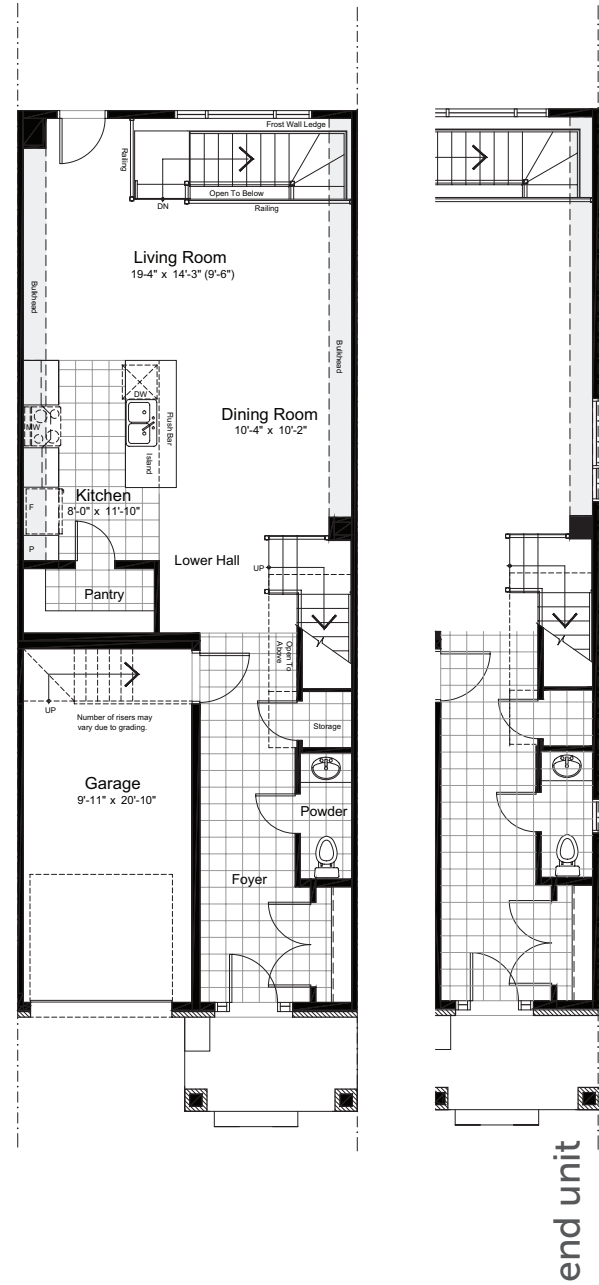
TOWNHOMES

2180 SQ.FT. 3 BED 2.5 BATH

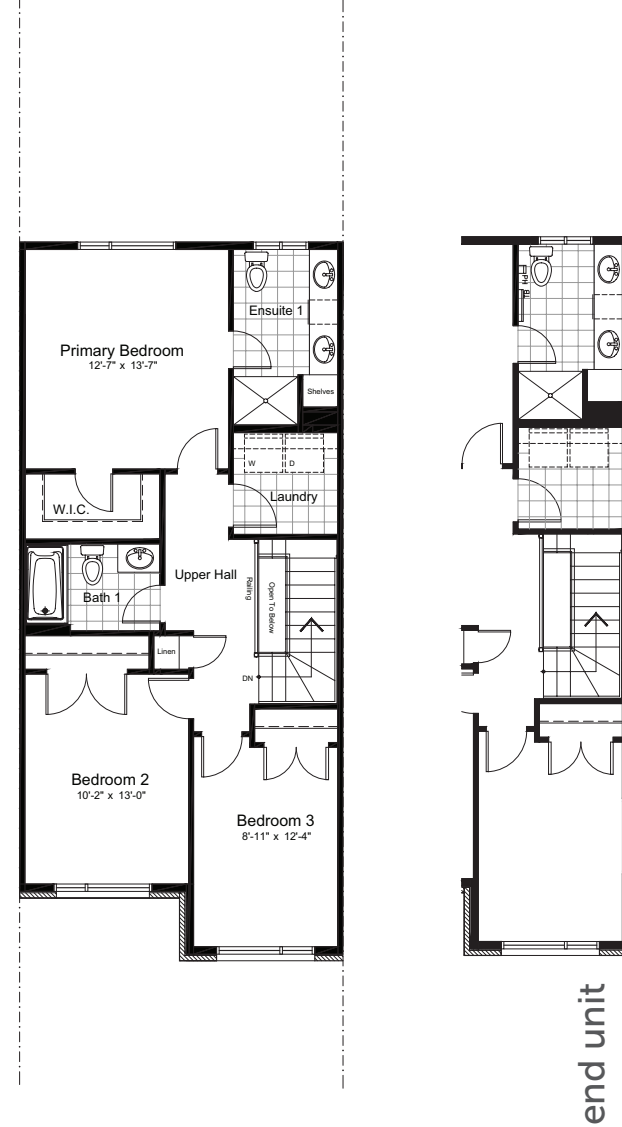
INCLUDING 455 SQ.FT. FINISHED BASEMENT



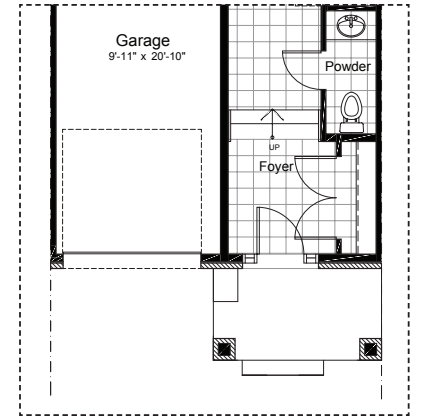
basement



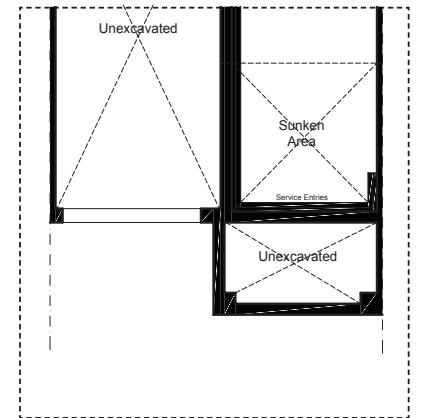
ground



second



sunken entry  
ground



sunken entry  
basement