

# SUNNINGDALE

TOWNHOMES



1995 SQ.FT. 3 BED 2.5 BATH

INCLUDING 330 SQ.FT. FINISHED BASEMENT

[claridgehomes.com](http://claridgehomes.com)

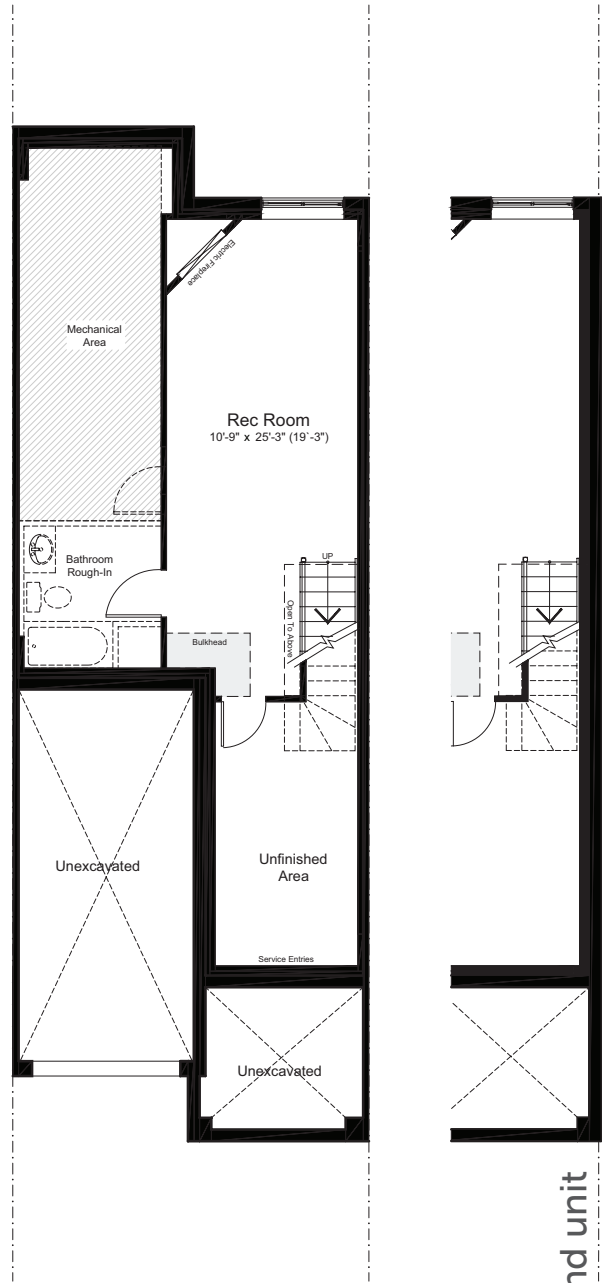


# SUNNINGDALE

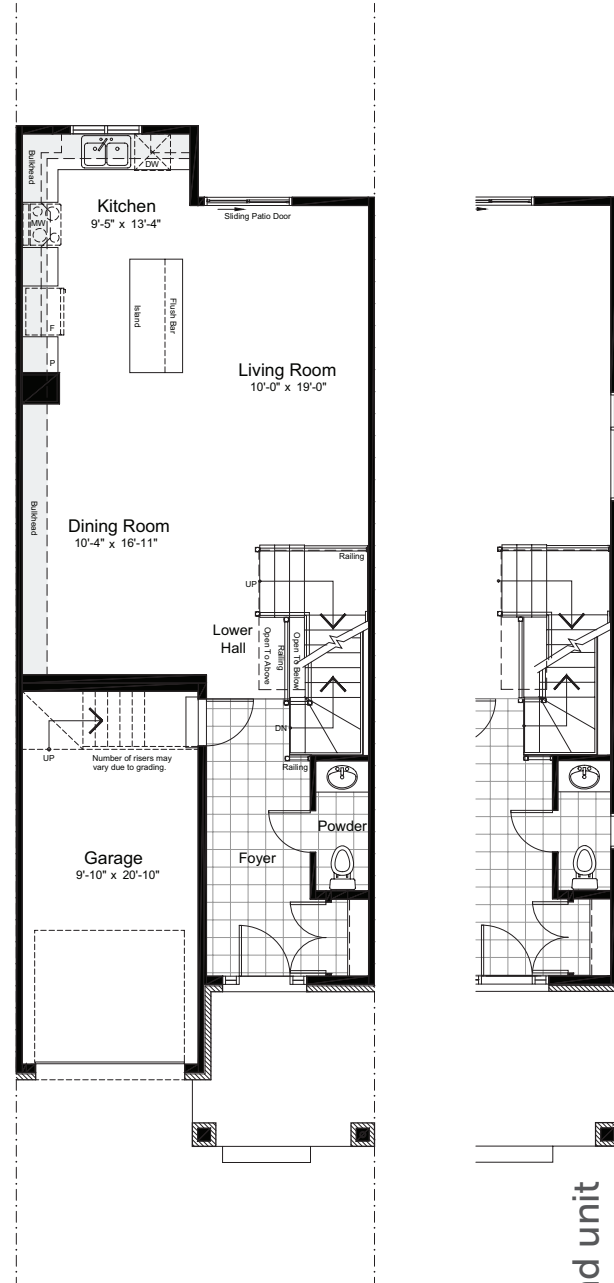
TOWNHOMES

1995 SQ.FT. 3 BED 2.5 BATH

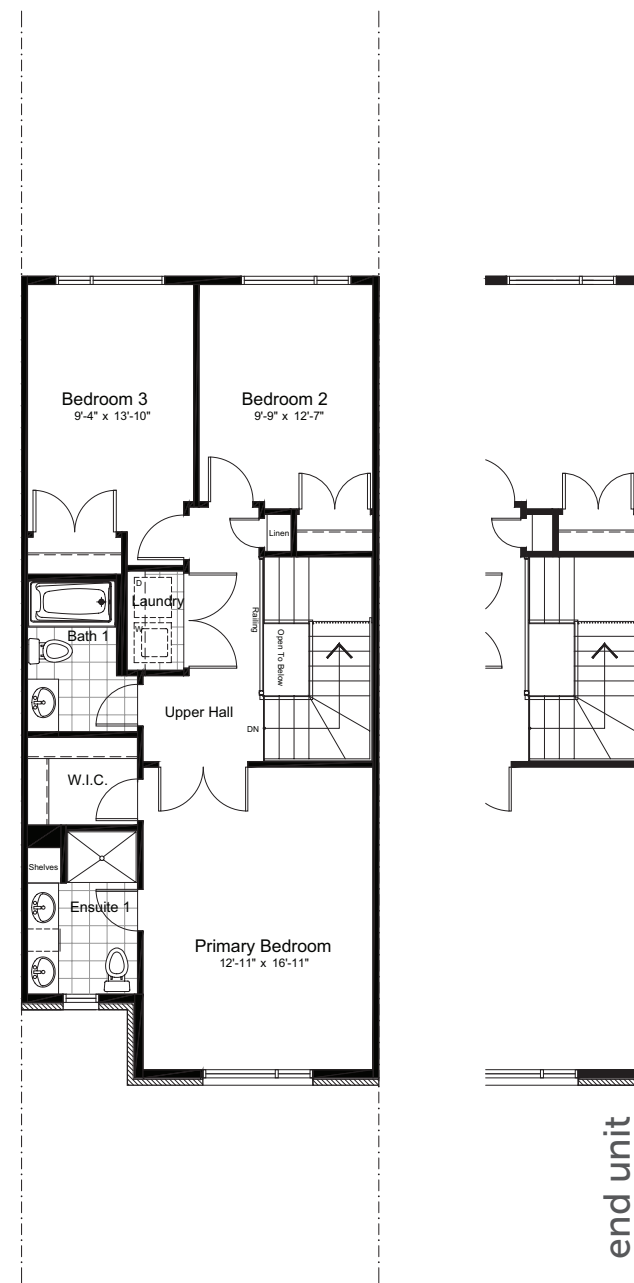
INCLUDING 330 SQ.FT. FINISHED BASEMENT



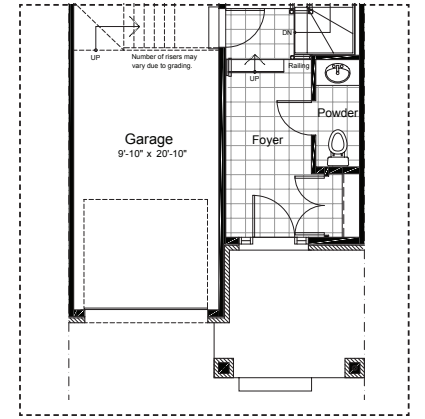
basement



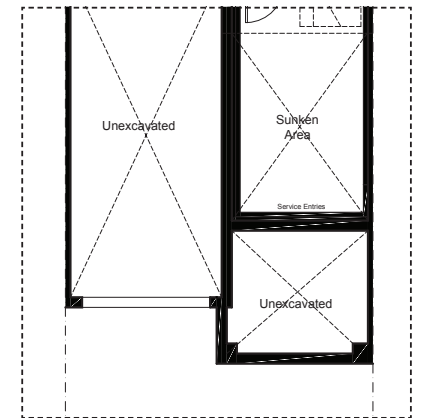
ground



second



sunken entry ground



sunken entry basement