

# DANIELSON

TOWNHOMES



1620 SQ.FT.

3 BED

1.5 BATH

INCLUDES 280 SQ.FT. FINISHED BASEMENT

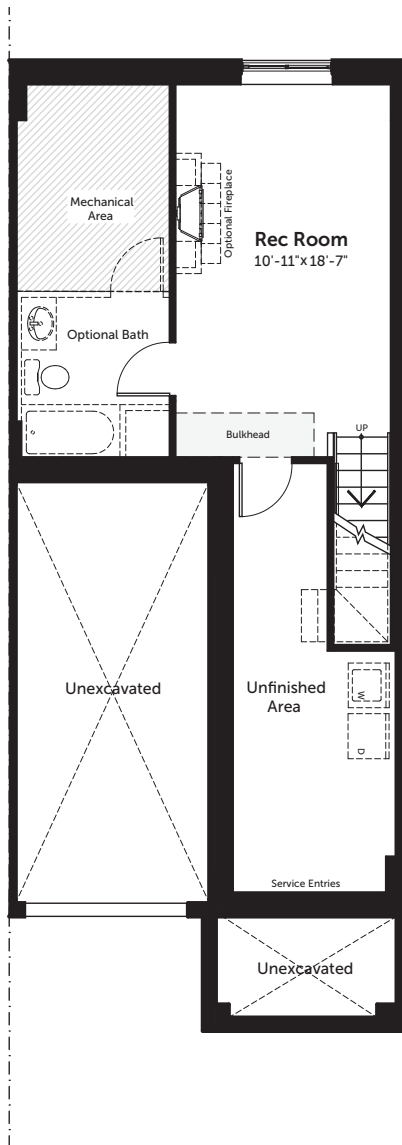


CLARIDGE  
HOMES

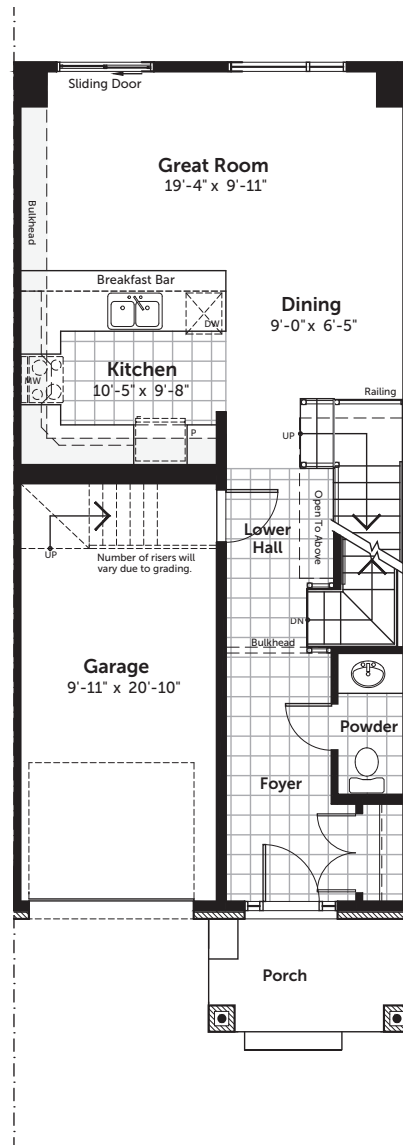
# DANIELSON

TOWNHOMES

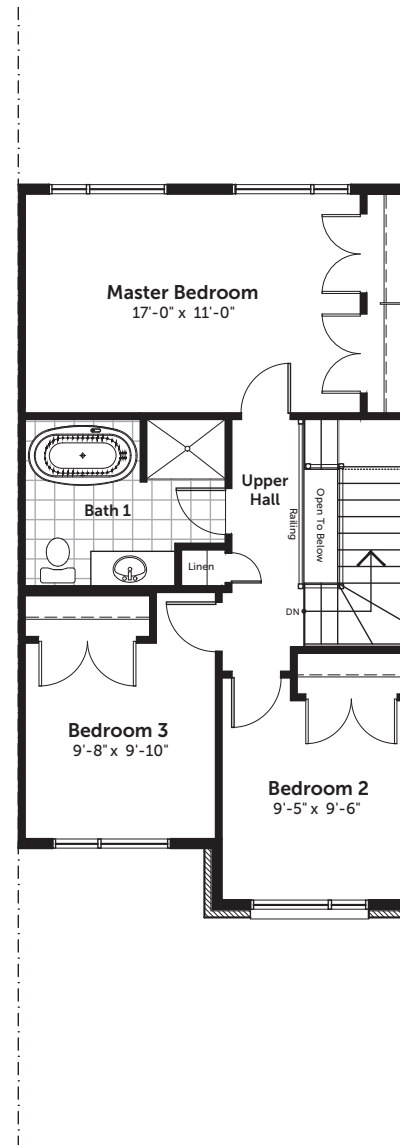
1620 SQ.FT. 3 BED 1.5 BATH  
 INCLUDES 280 SQ.FT. FINISHED BASEMENT



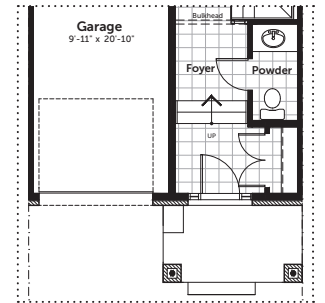
basement



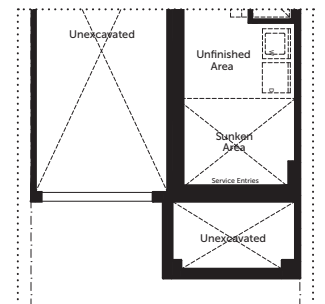
ground



second



sunken entry  
ground



sunken entry  
basement

**DISCLAIMER** Materials, specifications and floor plans are subject to change without notice. All dimensions are approximate and may not be to scale. Actual usable floor space may vary from the stated floor area. Exterior elevations are artistic concepts only: window size and design, roof pitch and brick detail may vary from plan. Layout for kitchen, furnace, HWT and laundry tub may vary from plan. Vertical and horizontal bulkheads, which are not shown on plan may be required for structural plumbing and ventilation runs. E. & O.E. Issued: April 2018